

# Battle.Net to IRC

1. Introduction
2. Settings
3. Usage
4. Special Thanks

## 1. Introduction

Battle.Net to IRC is an application designed to bridge the communication of Battle.Net and Internet Relay Chat (IRC) together. You can connect up to 8 accounts to Battle.Net, all in the same channel and one account to IRC that is also designated a channel. Only one name is used on Battle.Net but multiple keys may be used.

## 2. Settings

Settings for Battle.Net to IRC

**Battle.Net** | Key Manager | IRC | Miscellaneous

### Battle.Net Settings

Server: uswest.battle.net

BNLS Server: jbls.davnit.net

☐ Use Local Hashing

Username: BNET-to-IRC

Password: xxxxxxx

Channel: Op Vector

Broadcast Prefix:

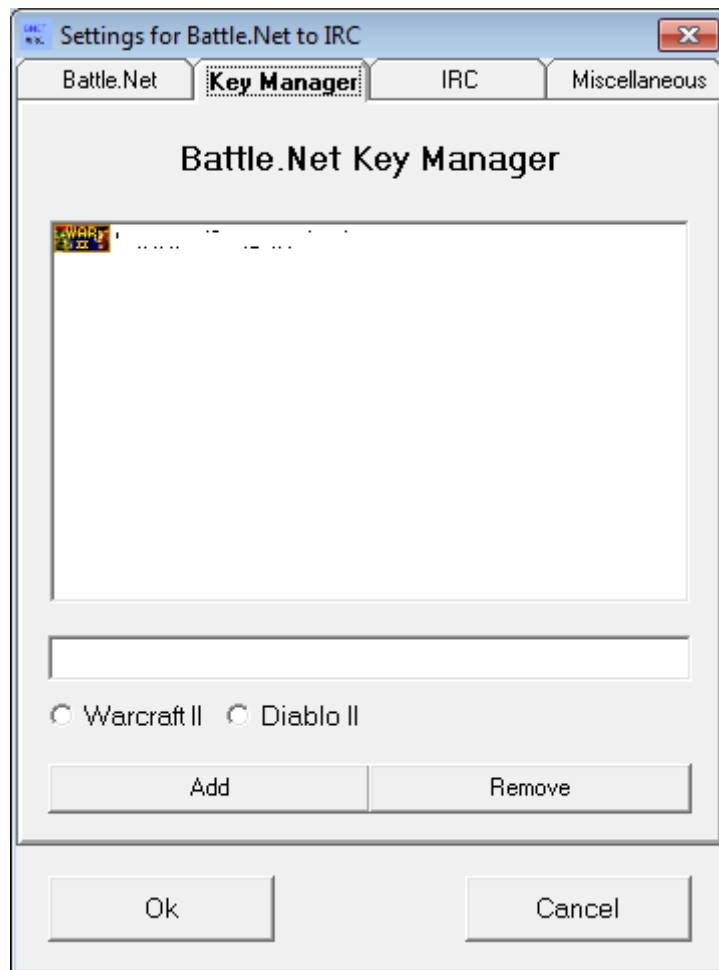
### Version Bytes

Warcraft II: 4F | Diablo II: 0E

Ok | Cancel

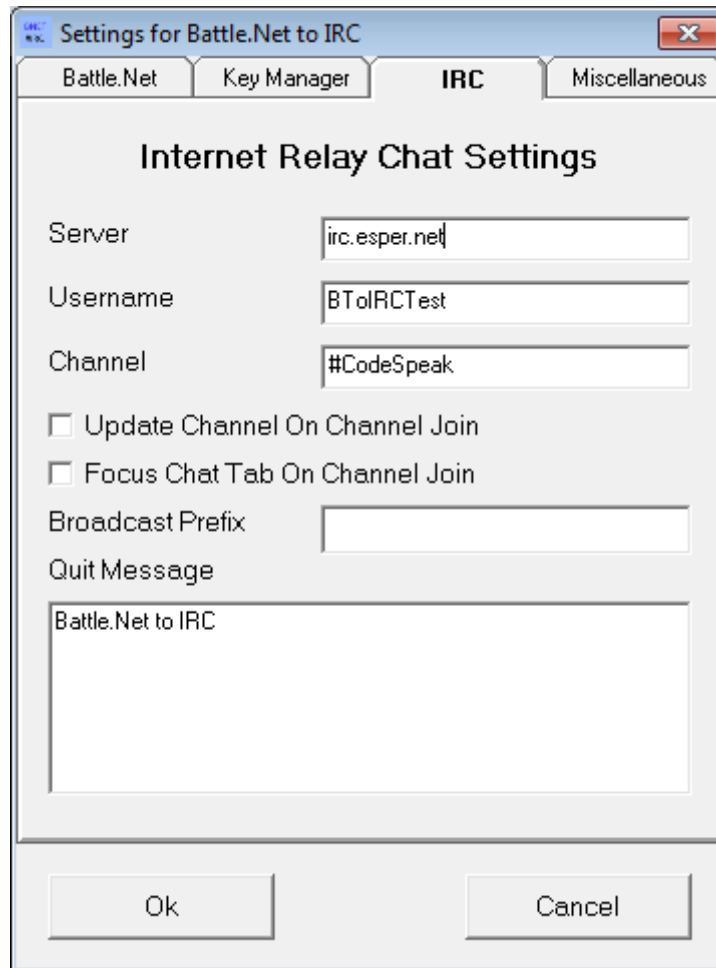
Battle.Net section

This section configures basic settings for the Battle.Net side of the program. If the **Use Local Hashing** option is checked, the program will use the local hashes provided to connect to Battle.Net instead of using the BNLS server. When connecting using the BNLS server and the product is rejected by Battle.Net for being either out of date or too new (incorrect version byte), the program will reconnect if BNLS updated the version byte. The **Broadcast Prefix** setting is used when broadcasting to IRC. If a message starts with the broadcast prefix, then it will be broadcast, otherwise it is ignored.



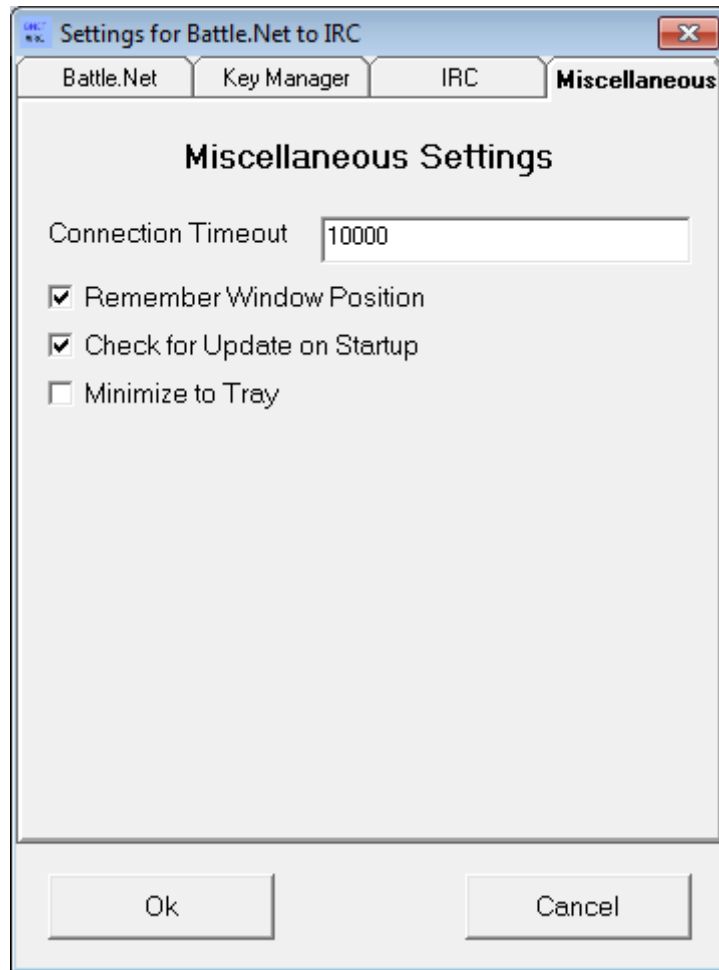
Battle.Net Key Manager section

This section allows you to configure the keys which the program will use to connect to Battle.Net. You can specify either Warcraft II or Diablo II keys. 26-digit Diablo II keys are supported as well. Keys with dashes are also accepted, but the dashes will be removed automatically when added.



IRC section

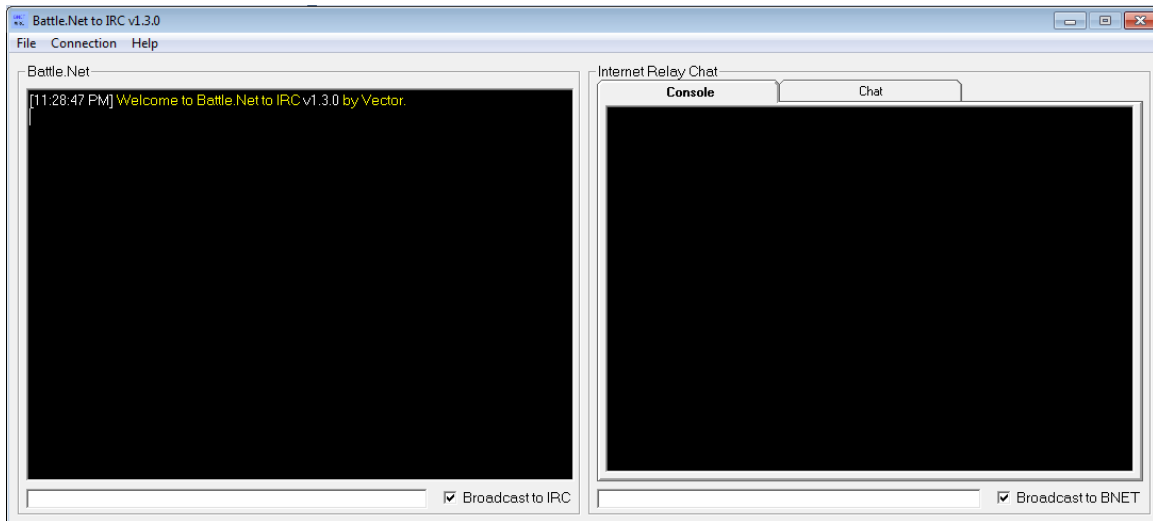
The IRC section has a few options for configuring basic settings for the connection to IRC. The **Server** setting optionally takes a port, such as irc.example.com:6690. If omitted, the default port is 6667. The **Update Channel On Channel Join** setting will automatically update the channel setting anytime a new channel is joined. The **Focus Chat Tab On Channel Join** setting will automatically focus the Chat tab in the IRC window whenever a new IRC channel is joined. The **Quit Message** setting displays a message to the channel the IRC client is in when quitting. Only one connection is established. Multiple channels are not supported at this time.



Miscellaneous section

This section contains general program settings that you can set. The **Connection Timeout** setting specifies the time in milliseconds to wait for the Battle.Net server, the BNLS server, and the IRC server when establishing a connection. The **Check for Update on Startup** setting will cause the program to check for a new version when it starts. The **Minimize to Tray** setting will cause the main window to minimize to the system tray when it is minimized. Simply click on the icon in the system tray to restore the main window.

### 3. Usage



Main Window

When both the Battle.Net and IRC connections are established, by default messages will not be broadcast between them. The **Broadcast to IRC** checkbox must be checked in order to forward messages from Battle.Net to IRC, and the **Broadcast to BNET** checkbox must be checked in order to forward messages from IRC to Battle.Net. The state of these checkboxes will be saved to the configuration.

## 4. Special Thanks

Brut

- For bringing to my attention that this program did not work on PvPGN
- For the idea of broadcast prefixes

Arana

- Helped with extensive testing for the 1.3.0 version, I really appreciate it!